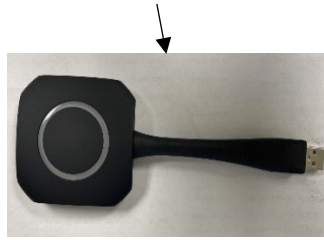


Eshare Dongle Instruction:

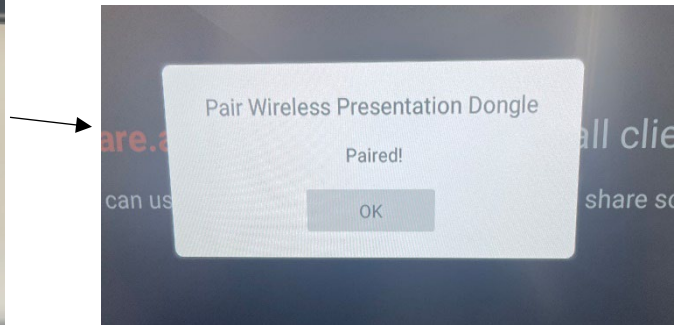


The Eshare Dongle can be used to connect both OneScreen Display Panel to your laptop and mobile Device.

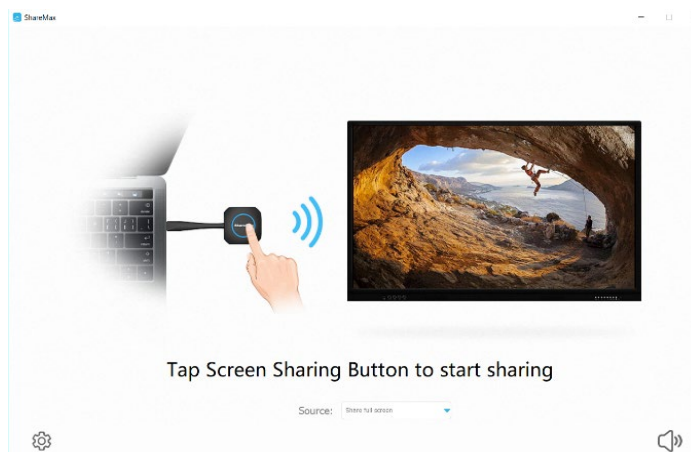
How it works, the dongle would create Hotspot for both devices to communicate with each other so you can share your device on the display panel.

Direction for Pairing Dongle to display if not pair already

- From the bottom of the Onescreen Touch display swipe up and then go to the home menu and select the **Eshare app** Insert **Eshare dongle** in any of the two USB input at the front of the Onescreen Touch panel, you should see it **Paired** when complete loading.



- For your **laptop**: Unplug the Eshare dongle from the Onescreen Touch panel then insert the dongle into your laptop USB port for it to load when finish loading you should see **Tap screen sharing button to start sharing** your laptop.



- For other **Mobile devices** you would need to download and install the **Eshare app** from either **Google play store** or **Apple store** to share your mobile device to display panel.

For further assistant please contact Tech Support at Ext# 3033