

TRIO

GULF COAST STATE COLLEGE

Orientation



Importance of College Orientation

Importance of College Orientation



Importance of College Orientation

- Orientation gives students a chance to meet their Professors and see how things work at their new school.



Importance of College Orientation

- Orientation gives students a chance to meet their Professors and see how things work at their new school.
- Orientation is also a good chance for meeting other students/faculty outside of the admissions office.



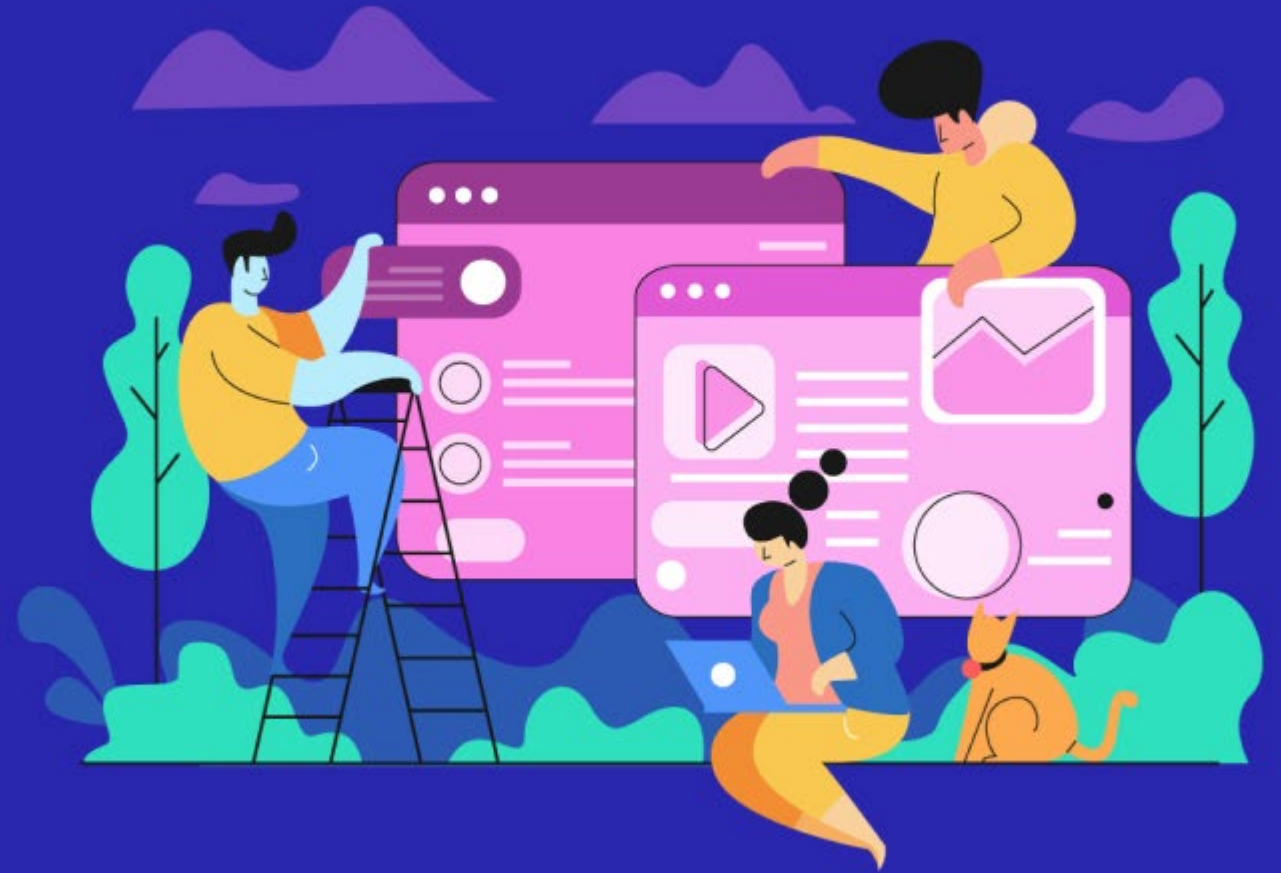
Importance of College Orientation

- Orientation gives students a chance to meet their Professors and see how things work at their new school.
- Orientation is also a good chance for meeting other students/faculty outside of the admissions office.
- College orientation programs are designed to help students transition into college life and boosts their excitement about their future.



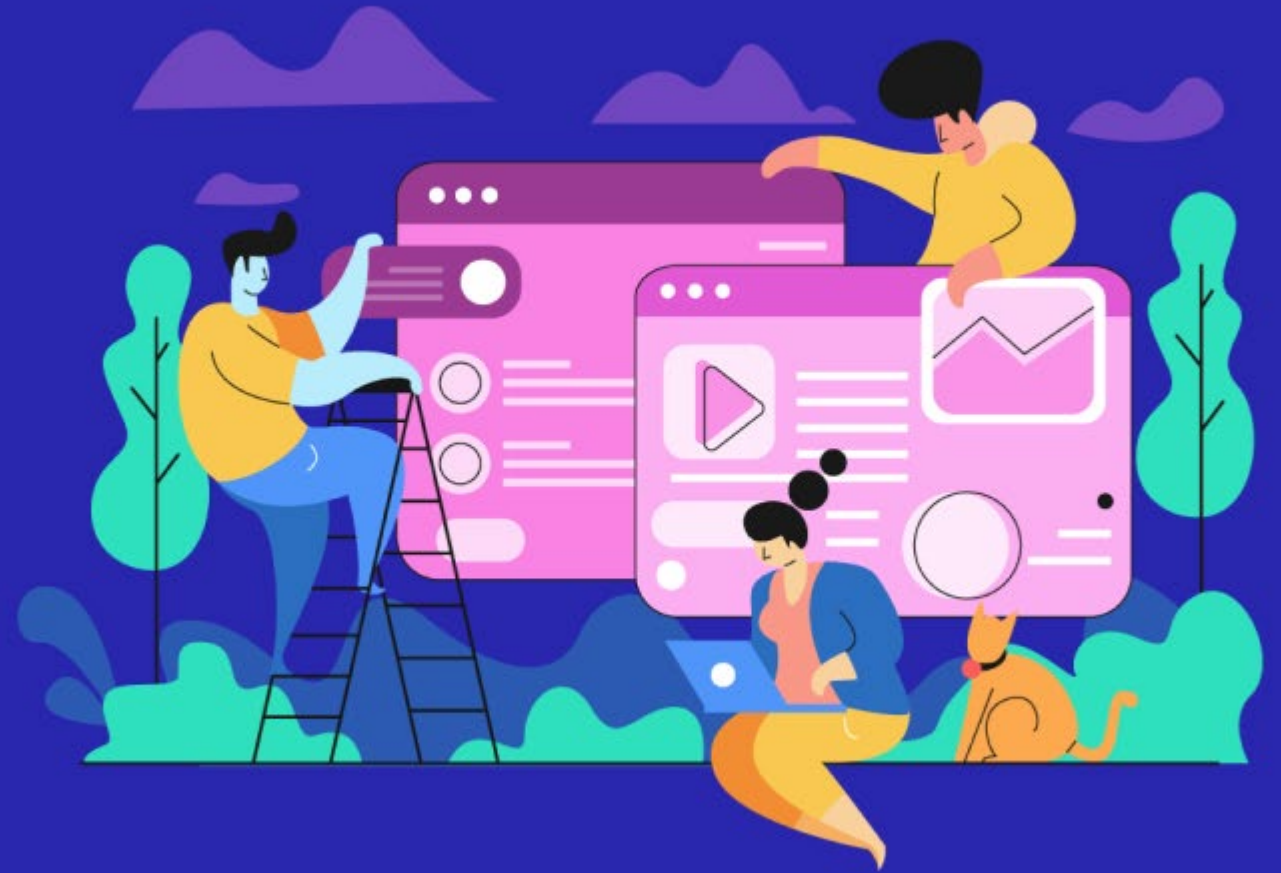
Orientation

Orientation



Orientation

- Gives a brief overview of all the different college accounts.



Orientation

- Gives a brief overview of all the different college accounts.

MyGCSC - Main dashboard

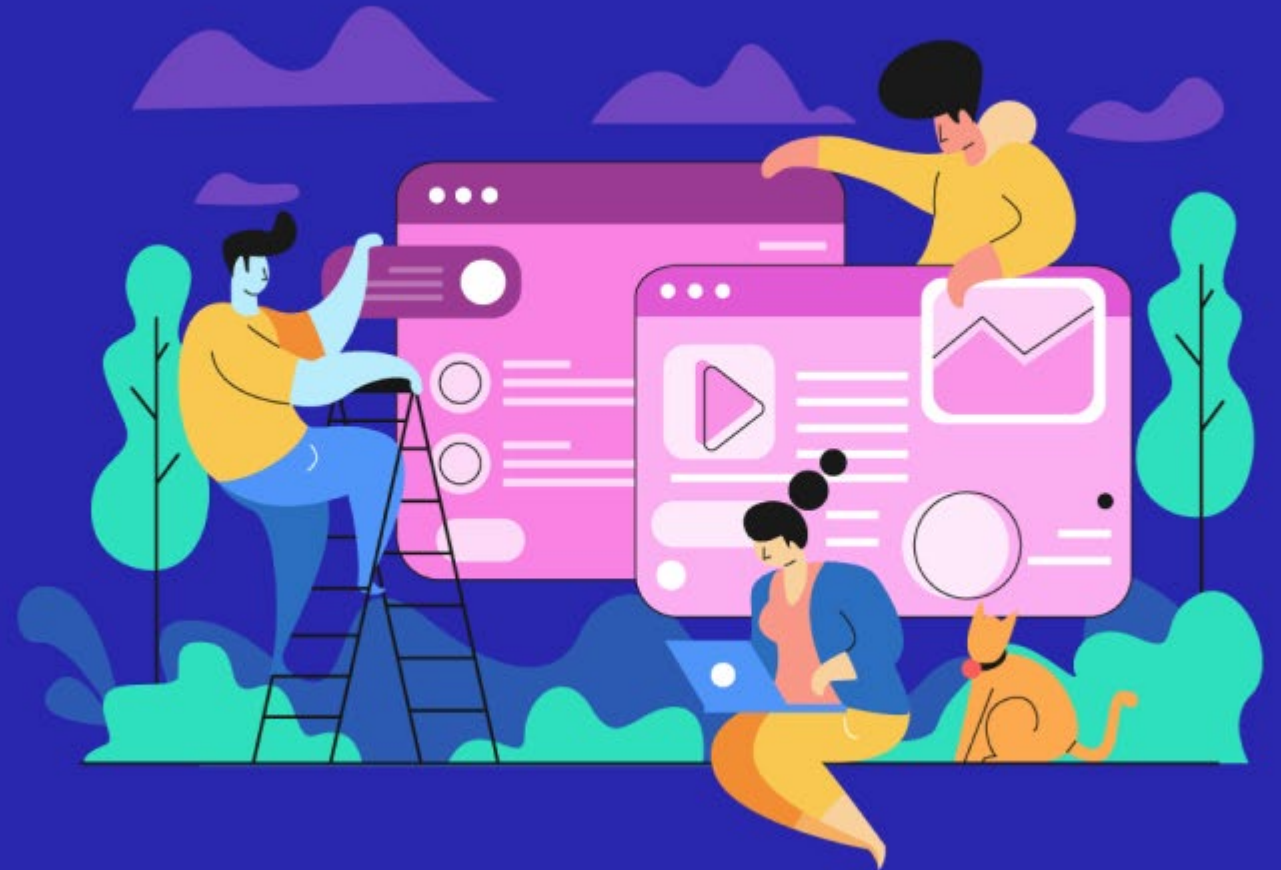


Orientation

- Gives a brief overview of all the different college accounts.

MyGCSC - Main dashboard

Canvas – your “learning management system” where your class activities may take place



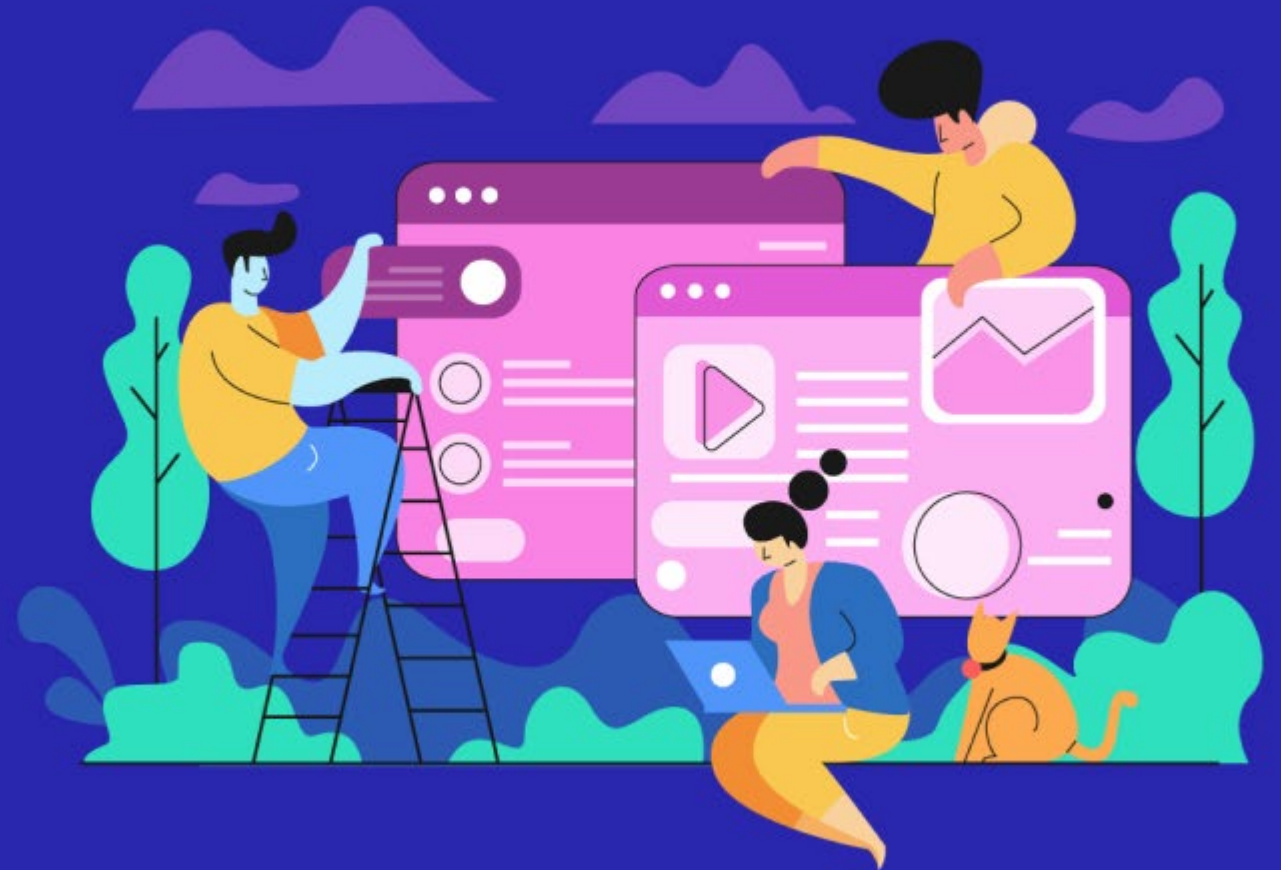
Orientation

- Gives a brief overview of all the different college accounts.

MyGCSC - Main dashboard

Canvas – your “learning management system” where your class activities may take place

Lighthouse – the college’s student information system



Orientation

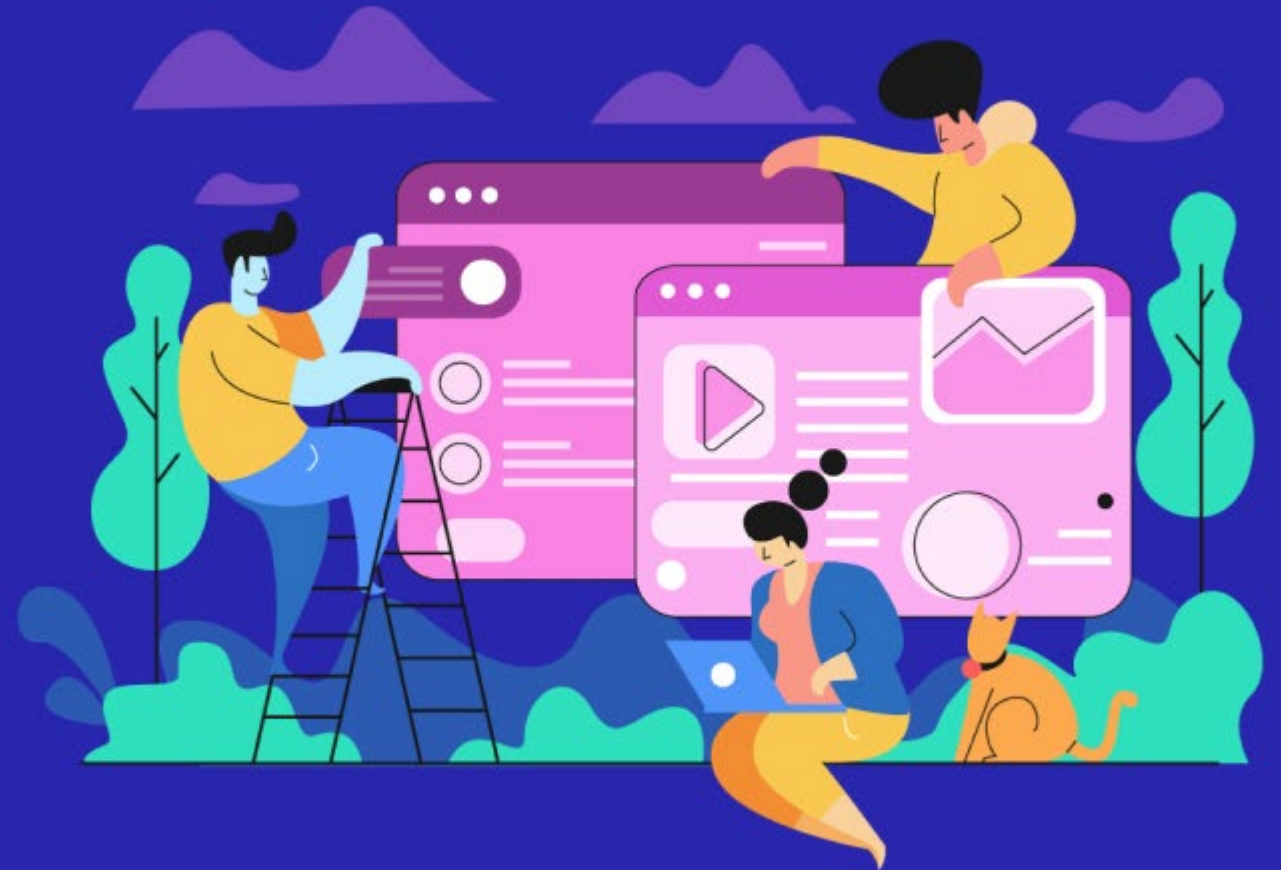
- Gives a brief overview of all the different college accounts.

MyGCSC - Main dashboard

Canvas – your “learning management system” where your class activities may take place

Lighthouse – the college’s student information system

Pathway Navigator – your first-time academic advisor who gets you on the path to your future



Orientation

- Gives a brief overview of all the different college accounts.

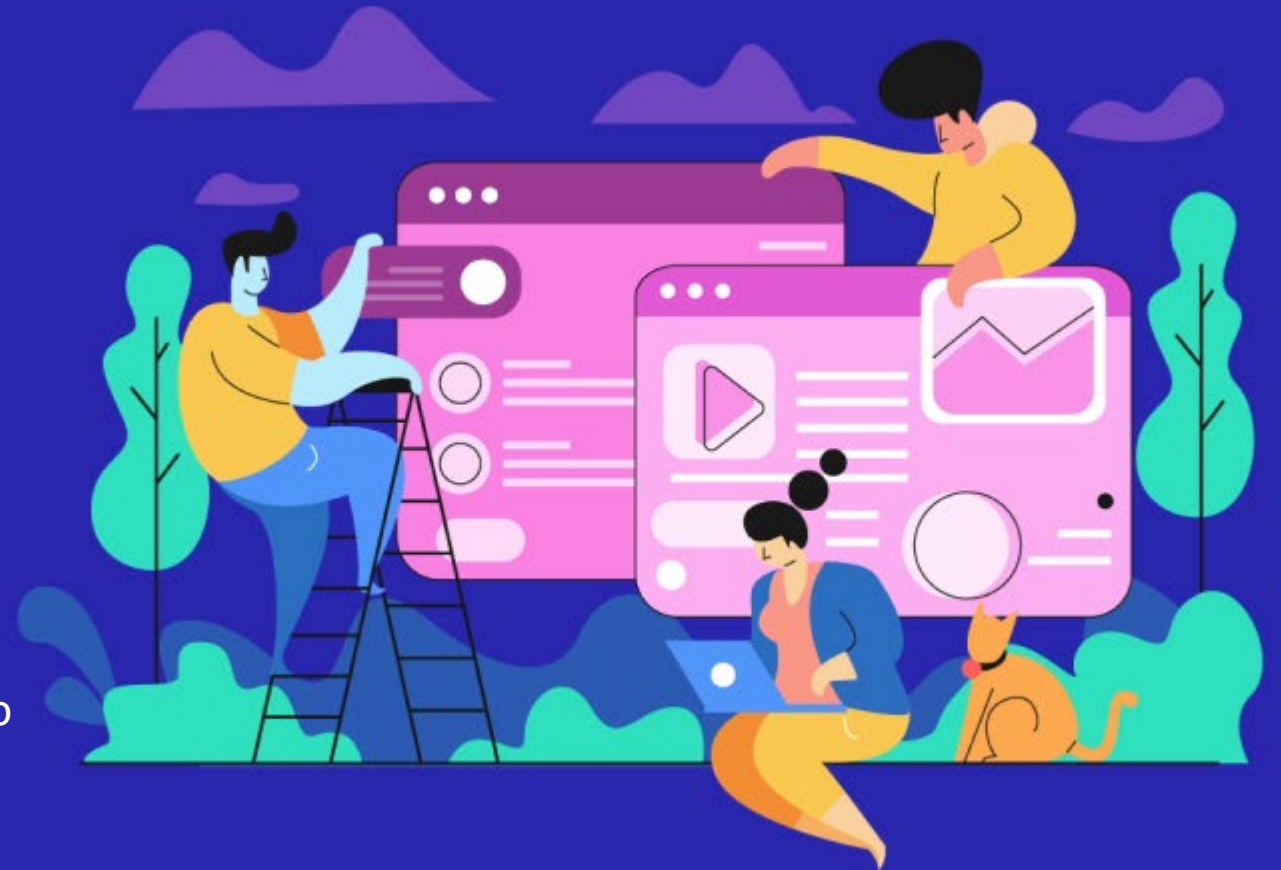
MyGCSC - Main dashboard

Canvas – your “learning management system” where your class activities may take place

Lighthouse – the college’s student information system

Pathway Navigator – your first-time academic advisor who gets you on the path to your future

Degree Evaluation – the level of study necessary to move a career or university transfer



Orientation

- Gives a brief overview of all the different college accounts.

MyGCSC - Main dashboard

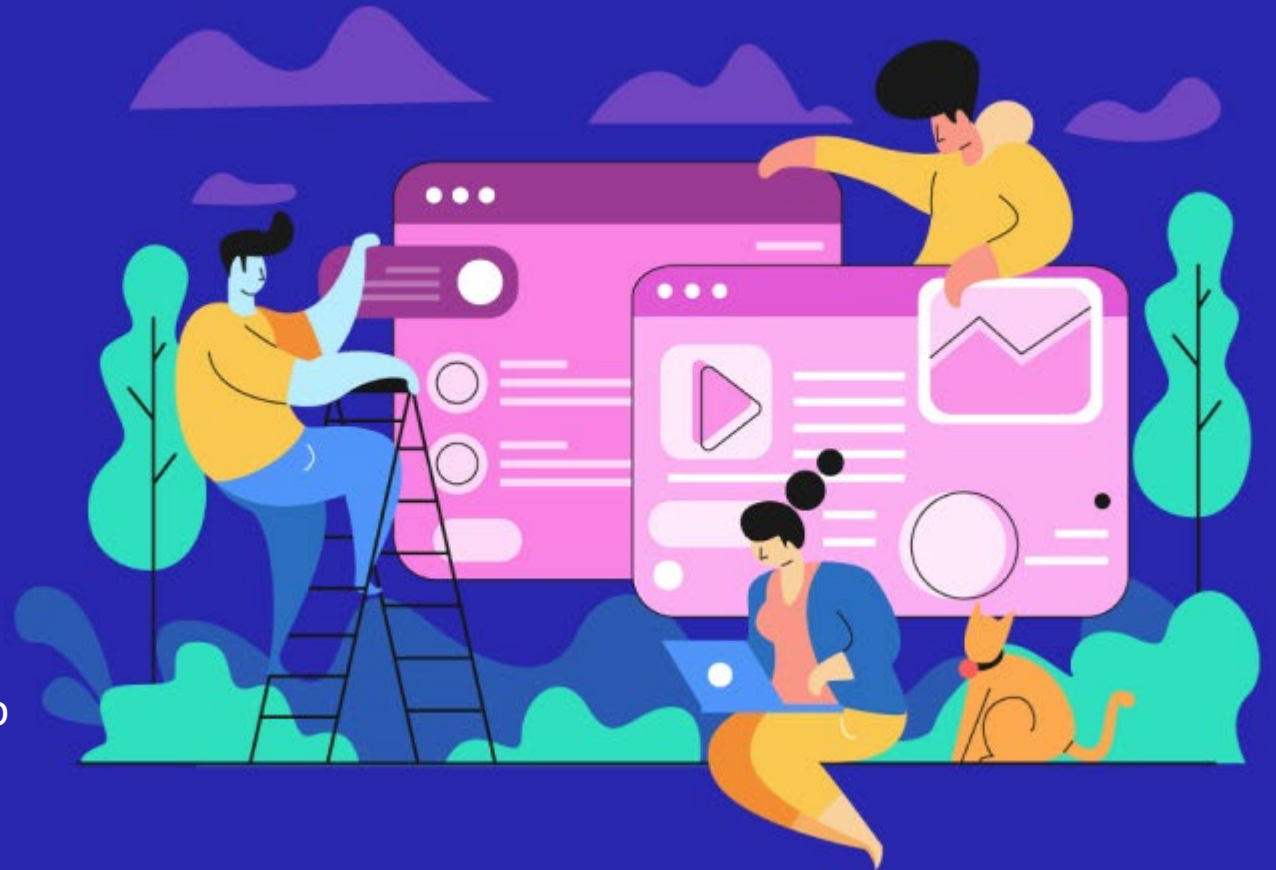
Canvas – your “learning management system” where your class activities may take place

Lighthouse – the college’s student information system

Pathway Navigator – your first-time academic advisor who gets you on the path to your future

Degree Evaluation – the level of study necessary to move a career or university transfer

PaperCut – the system that provides you access to use campus printers



Your Academic Goal

Your Academic Goal



Your Academic Goal

- Explains all of the current degree offerings of **GCSC**:



Your Academic Goal

- Explains all of the current degree offerings of **GCSC**:
- Student Navigation Center – Where you meet with your **Pathway Navigator**



Student Success

Student Success



Student Success

- Details various strategies for thriving throughout college



Student Success

- Details various strategies for thriving throughout college

Time Management



Student Success

- Details various strategies for thriving throughout college

Time Management

Study Tips



Student Success

- Details various strategies for thriving throughout college

Time Management

Study Tips

Notetaking skills



Student Success

- Details various strategies for thriving throughout college

Time Management

Study Tips

Notetaking skills

Participating in class



Placement Exams: Math and English

Placement Exams: Math and English



Placement Exams: Math and English

- Determines your readiness for English and Mathematics



Placement Exams: Math and English

- Determines your readiness for English and Mathematics
- Describes the different types of placement tests



Placement Exams: Math and English

- Determines your readiness for English and Mathematics
- Describes the different types of placement tests
- Flexible Placement



Placement Exams: Math and English

- Determines your readiness for English and Mathematics
- Describes the different types of placement tests
- Flexible Placement
- Traditional Placement



Placement Exams: Math and English

- Determines your readiness for English and Mathematics
- Describes the different types of placement tests

Flexible Placement

Traditional Placement

- Your **academic plan** may require higher level mathematics skills and, in order to take many of these mathematics classes, you may have to take a placement test in mathematics to assess your skills prior to taking these higher level mathematics courses.



Plan Your Schedule

Plan Your Schedule



Plan Your Schedule

- Tips for making the most of your academic career



Plan Your Schedule

- Tips for making the most of your academic career
- Get to know the requirements of the degree



Plan Your Schedule

- Tips for making the most of your academic career
- Get to know the requirements of the degree
- Learn about prerequisite and co-prerequisite's and why they are important for your degree



Plan Your Schedule

- Tips for making the most of your academic career
- Get to know the requirements of the degree
- Learn about prerequisite and co-prerequisite's and why they are important for your degree
- Tips for choosing classes and how to build your schedule.



Plan Your Schedule

- Tips for making the most of your academic career
- Get to know the requirements of the degree
- Learn about prerequisite and co-prerequisite's and why they are important for your degree
- Tips for choosing classes and how to build your schedule.
- Choosing between in-person, web and hybrid classes.



How To Register

How To Register



How To Register

- How to search for classes



How To Register

- How to search for classes
- How to use Lighthouse to generate potential schedules



How To Register

- How to search for classes
- How to use Lighthouse to generate potential schedules
- How to add/drop/swap classes in Lighthouse



How To Register

- How to search for classes
- How to use Lighthouse to generate potential schedules
- How to add/drop/swap classes in Lighthouse
- Understanding when a prerequisite or co-requisite is needed



Tuition, Fees, & Financial Aid

Tuition, Fees, & Financial Aid



Tuition, Fees, & Financial Aid

- Understanding how much college costs



Tuition, Fees, & Financial Aid

- Understanding how much college costs
- Provides basic info on:
 - Pell Grant
 - Student loans
 - GCSC Scholarships
 - Non-GCSC Scholarships
 - Florida Prepaid Tuition
 - Bright Futures
 - Veteran's GI Bill
 - Active Duty Military
 - Paying out-of-pocket



Student Services

Student Services



Student Services

- Gives an overview of various services provided to you on campus:



Student Services

- Gives an overview of various services provided to you on campus:
- Library



Student Services

- Gives an overview of various services provided to you on campus:
- Library
- Math lab



Student Services

- Gives an overview of various services provided to you on campus:
- Library
- Math lab
- Writing and Reading Lab



Student Services

- Gives an overview of various services provided to you on campus:
- Library
- Math lab
- Writing and Reading Lab
- Student Navigation Center
where you meet with your Pathway navigator and Faculty Advisors



Student Services

- Gives an overview of various services provided to you on campus:
- Library
- Math lab
- Writing and Reading Lab
- Student Navigation Center
where you meet with your Pathway navigator and Faculty Advisors
- Student Accessibility Resources



Student Services

- Gives an overview of various services provided to you on campus:
- Library
- Math lab
- Writing and Reading Lab
- Student Navigation Center
where you meet with your Pathway navigator and Faculty Advisors
- Student Accessibility Resources
- Student Counseling Resources



Student Services

- Gives an overview of various services provided to you on campus:
- Library
- Math lab
- Writing and Reading Lab
- Student Navigation Center
where you meet with your Pathway navigator and Faculty Advisors
- Student Accessibility Resources
- Student Counseling Resources
- Support Workshops



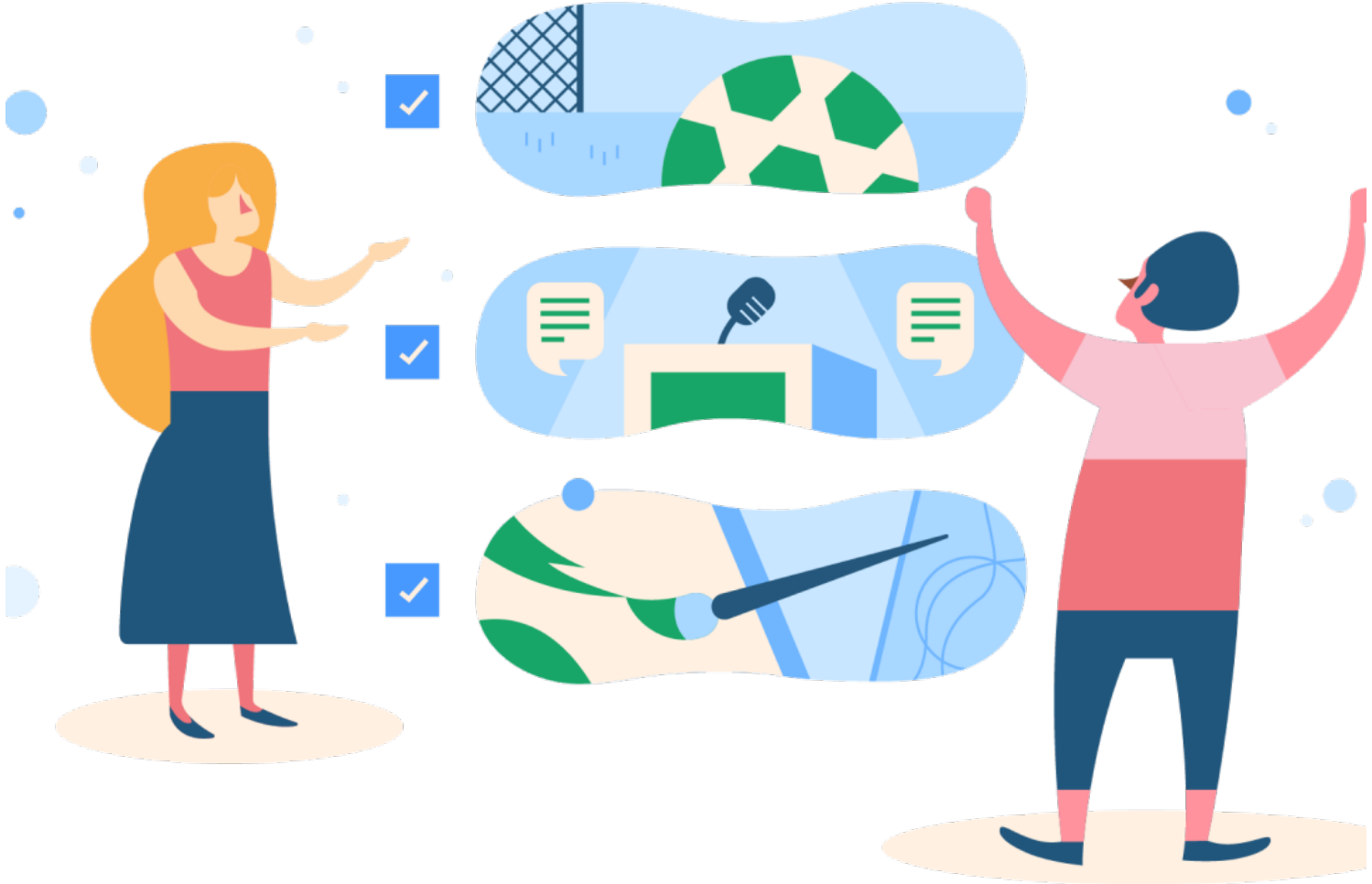
Student Services

- Gives an overview of various services provided to you on campus:
- Library
- Math lab
- Writing and Reading Lab
- Student Navigation Center
where you meet with your Pathway navigator and Faculty Advisors
- Student Accessibility Resources
- Student Counseling Resources
- Support Workshops
- TRiO



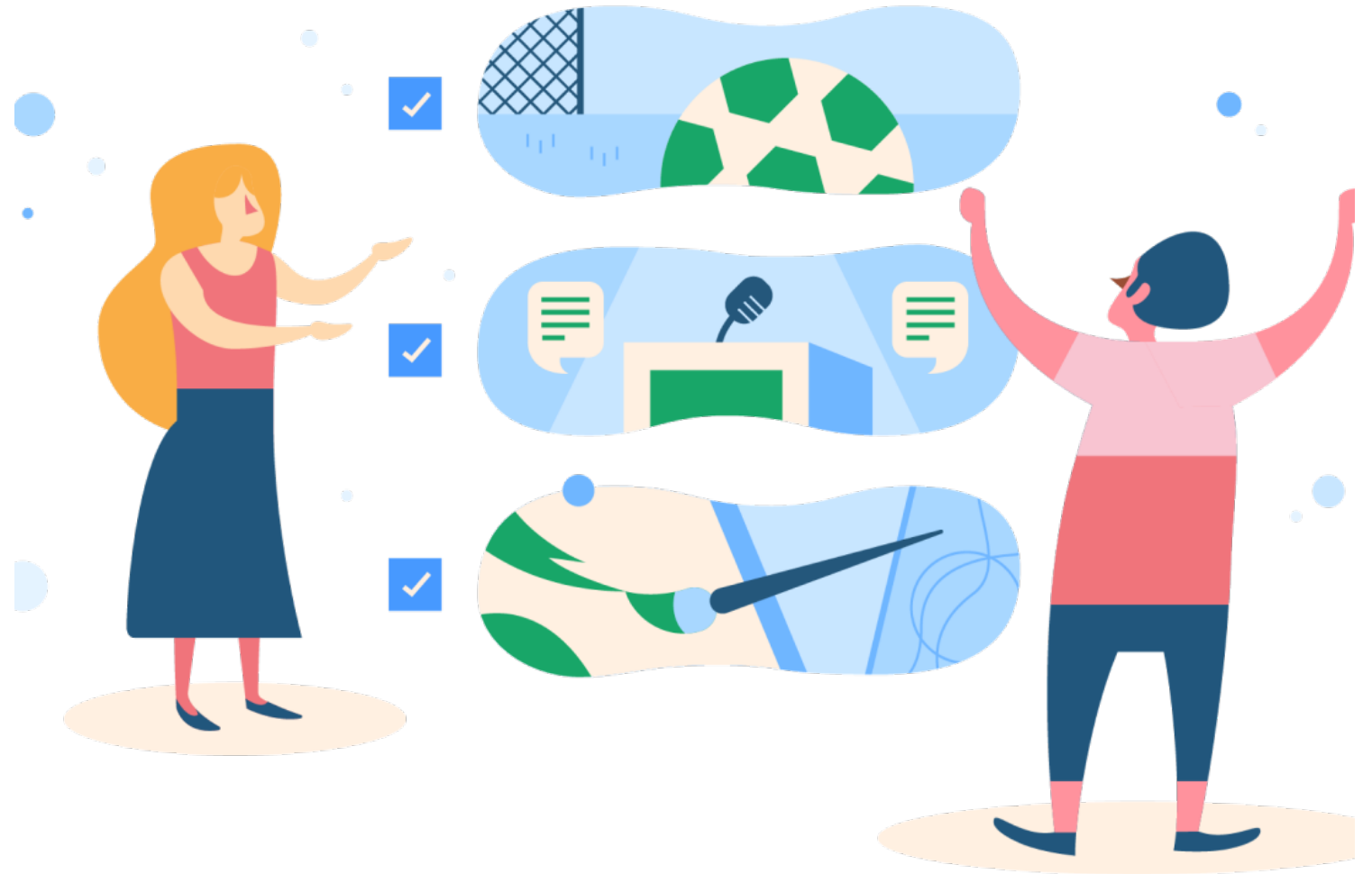
Student Life: Get Involved

Student Life: Get Involved



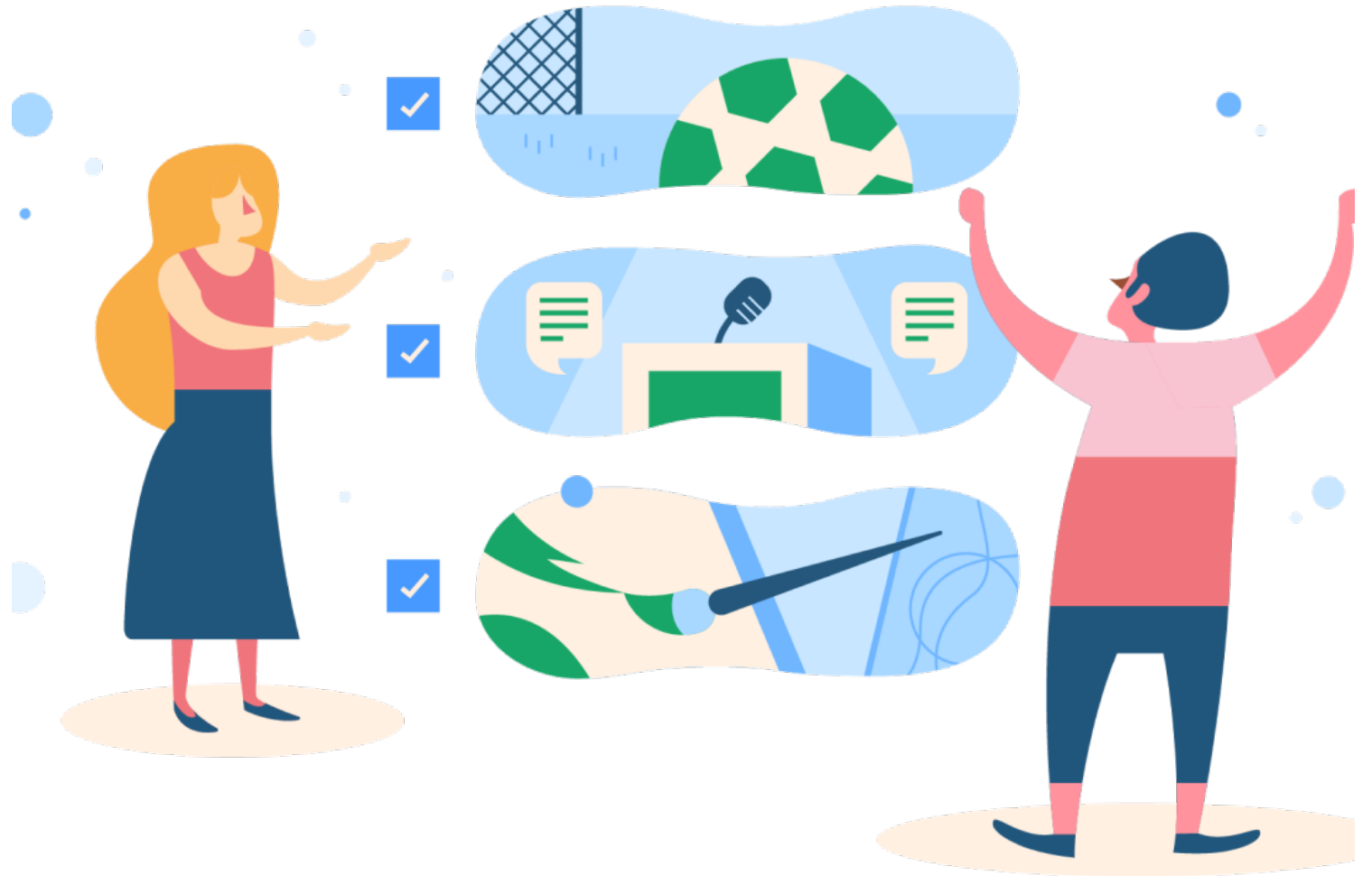
Student Life: Get Involved

- Student Government



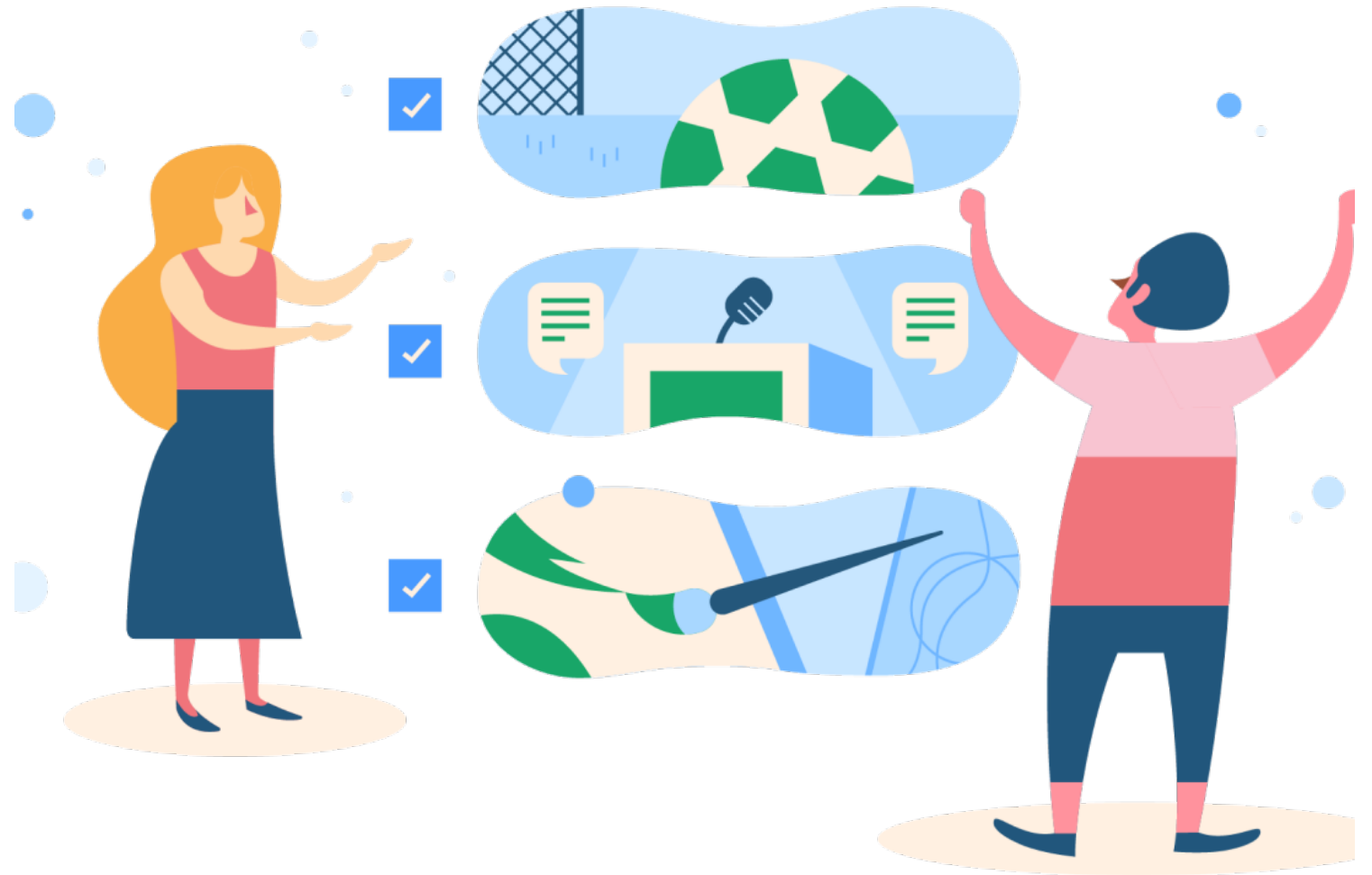
Student Life: Get Involved

- Student Government
- Campus Clubs & Organizations



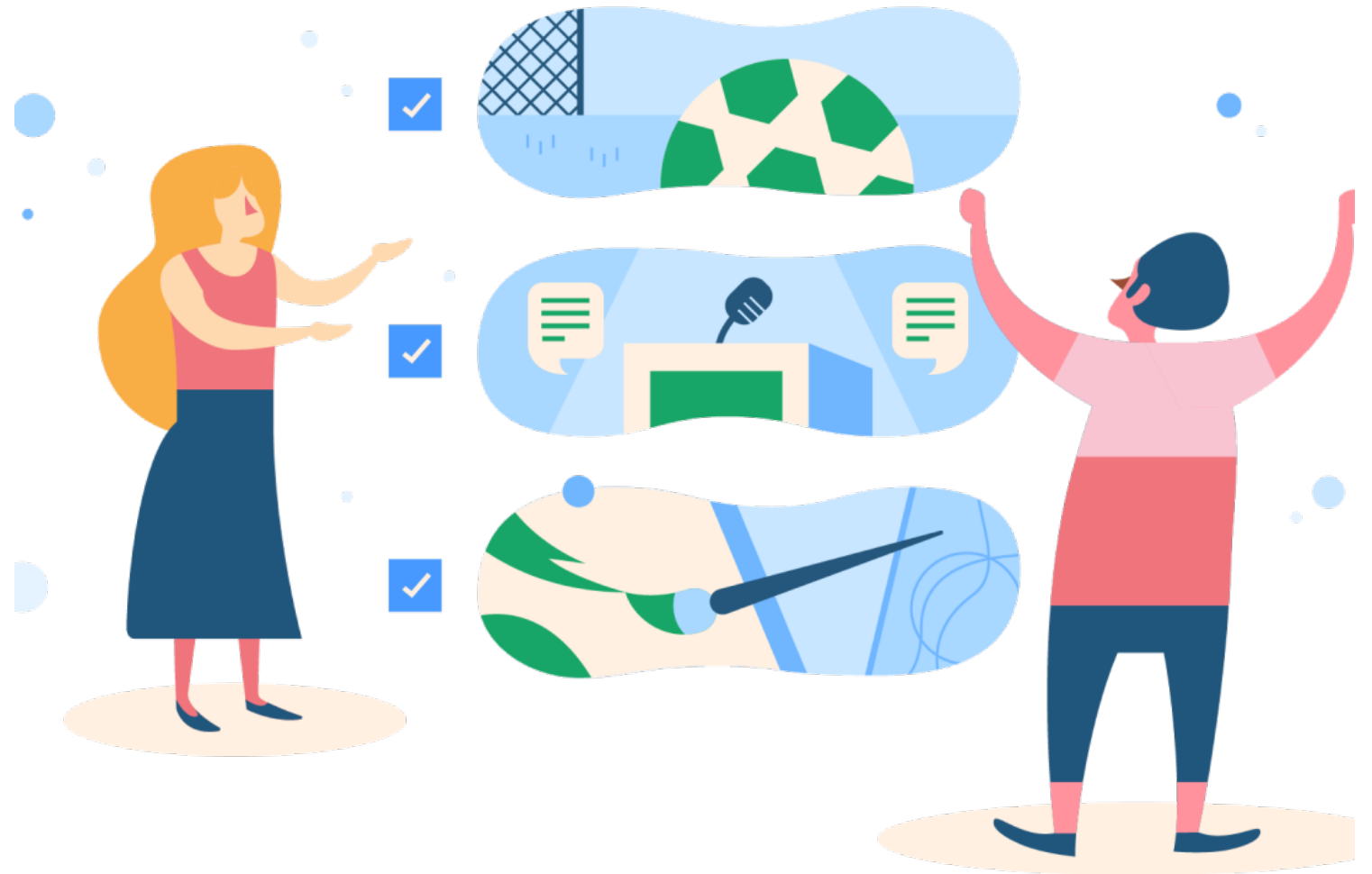
Student Life: Get Involved

- Student Government
- Campus Clubs & Organizations
- Honors Program



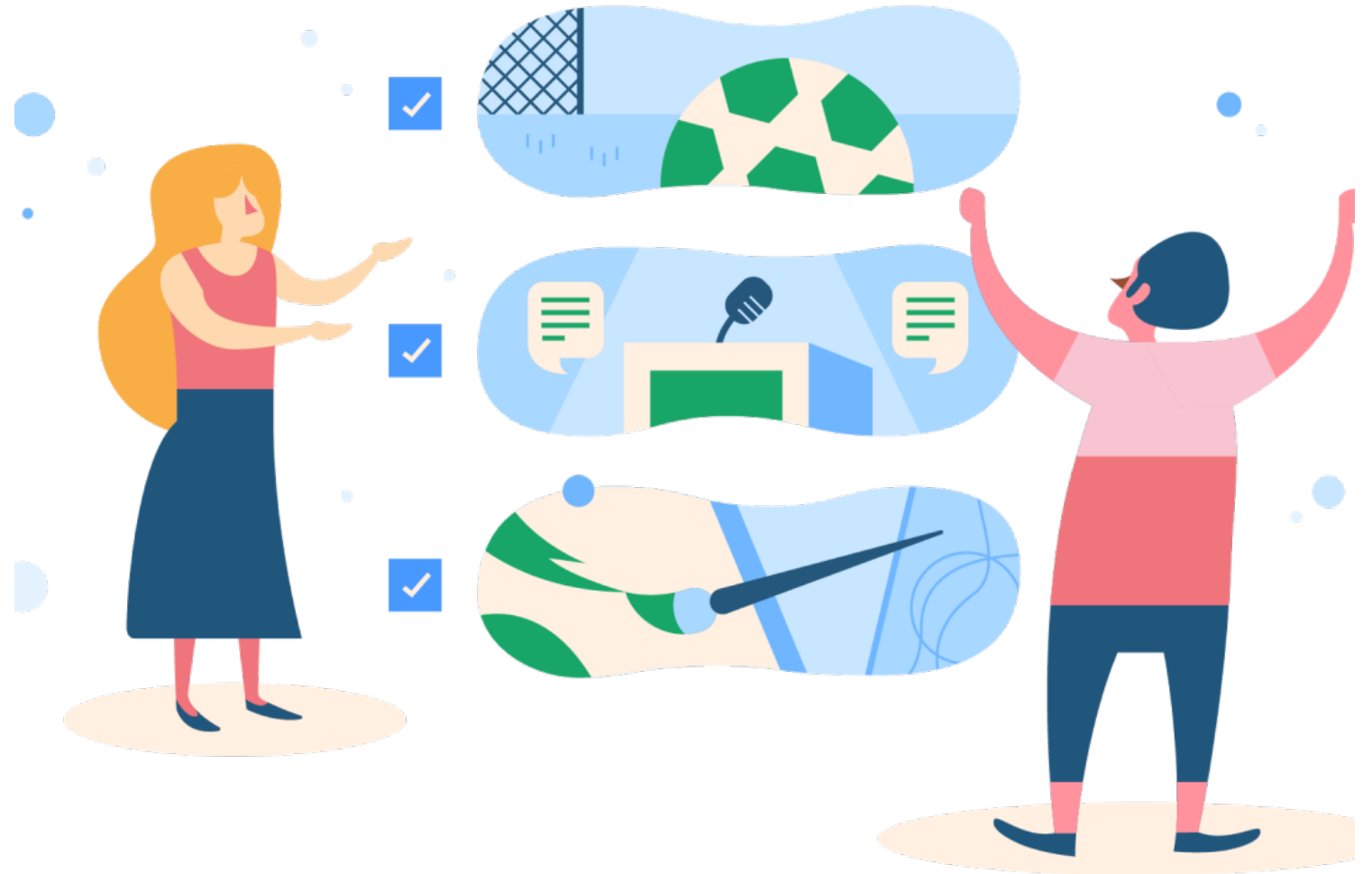
Student Life: Get Involved

- Student Government
- Campus Clubs & Organizations
- Honors Program
- Athletics Department



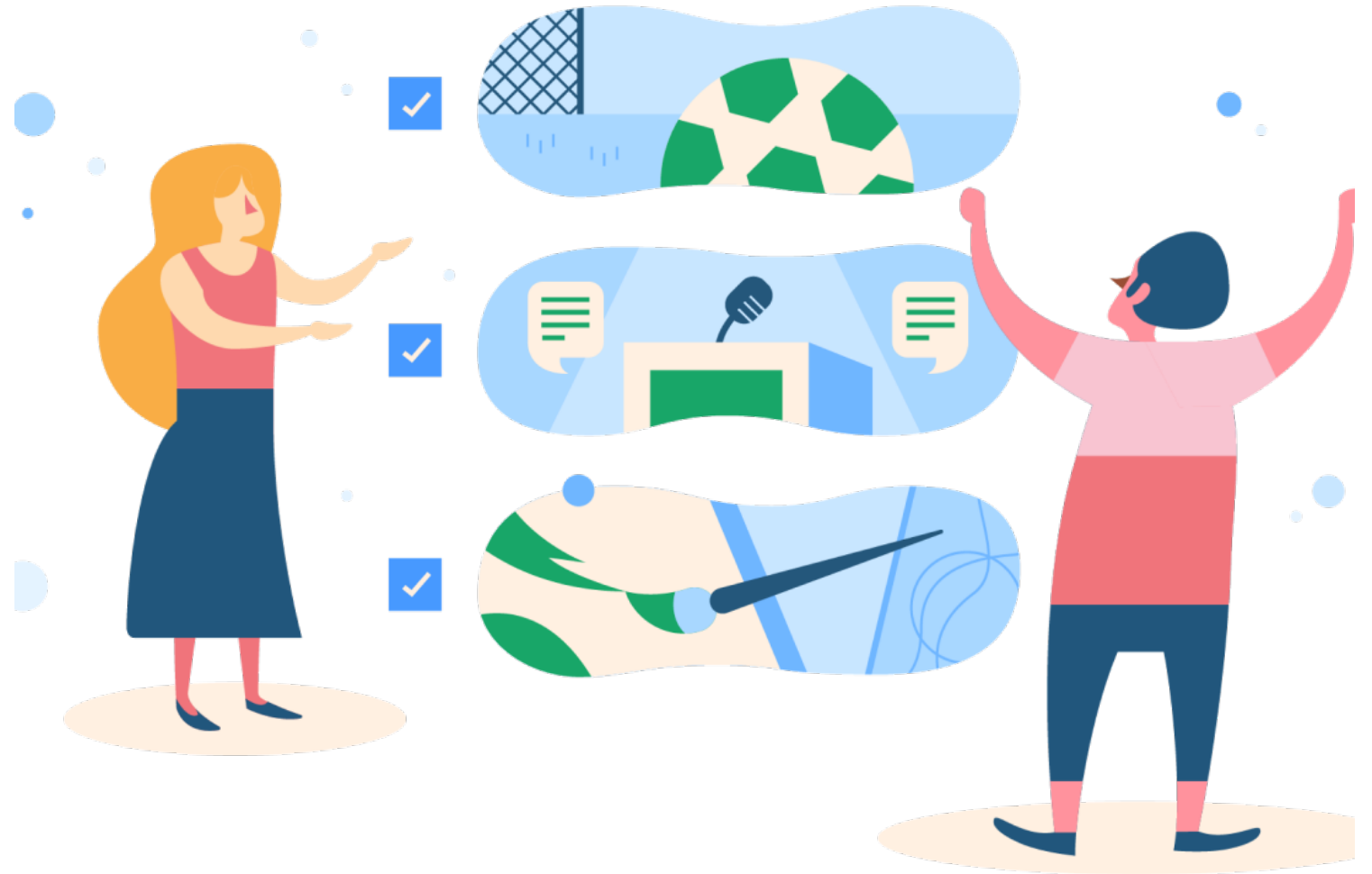
Student Life: Get Involved

- Student Government
- Campus Clubs & Organizations
- Honors Program
- Athletics Department
- Student Activities Board Alliance



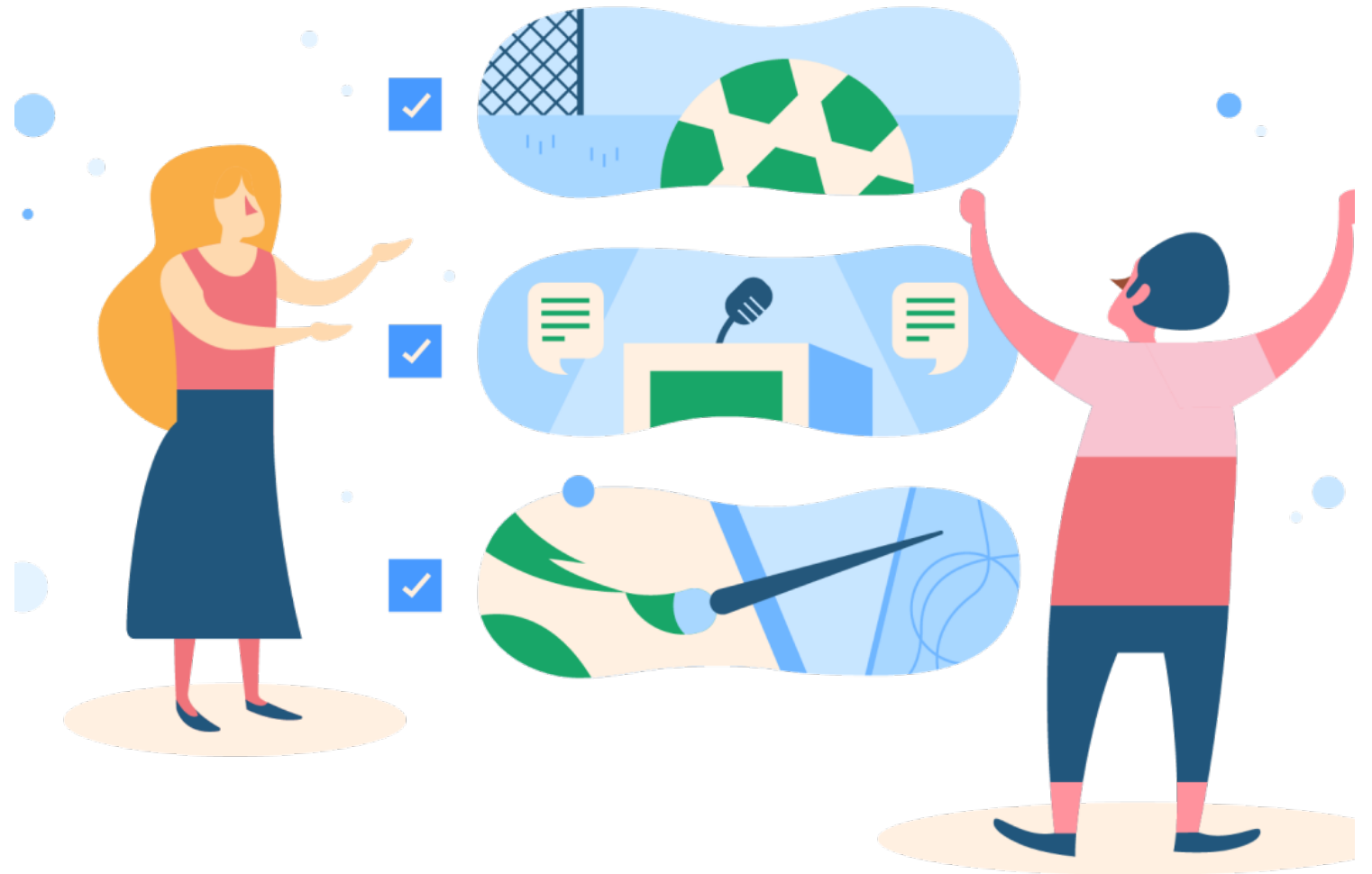
Student Life: Get Involved

- Student Government
- Campus Clubs & Organizations
- Honors Program
- Athletics Department
- Student Activities Board Alliance
- Campus Recreation



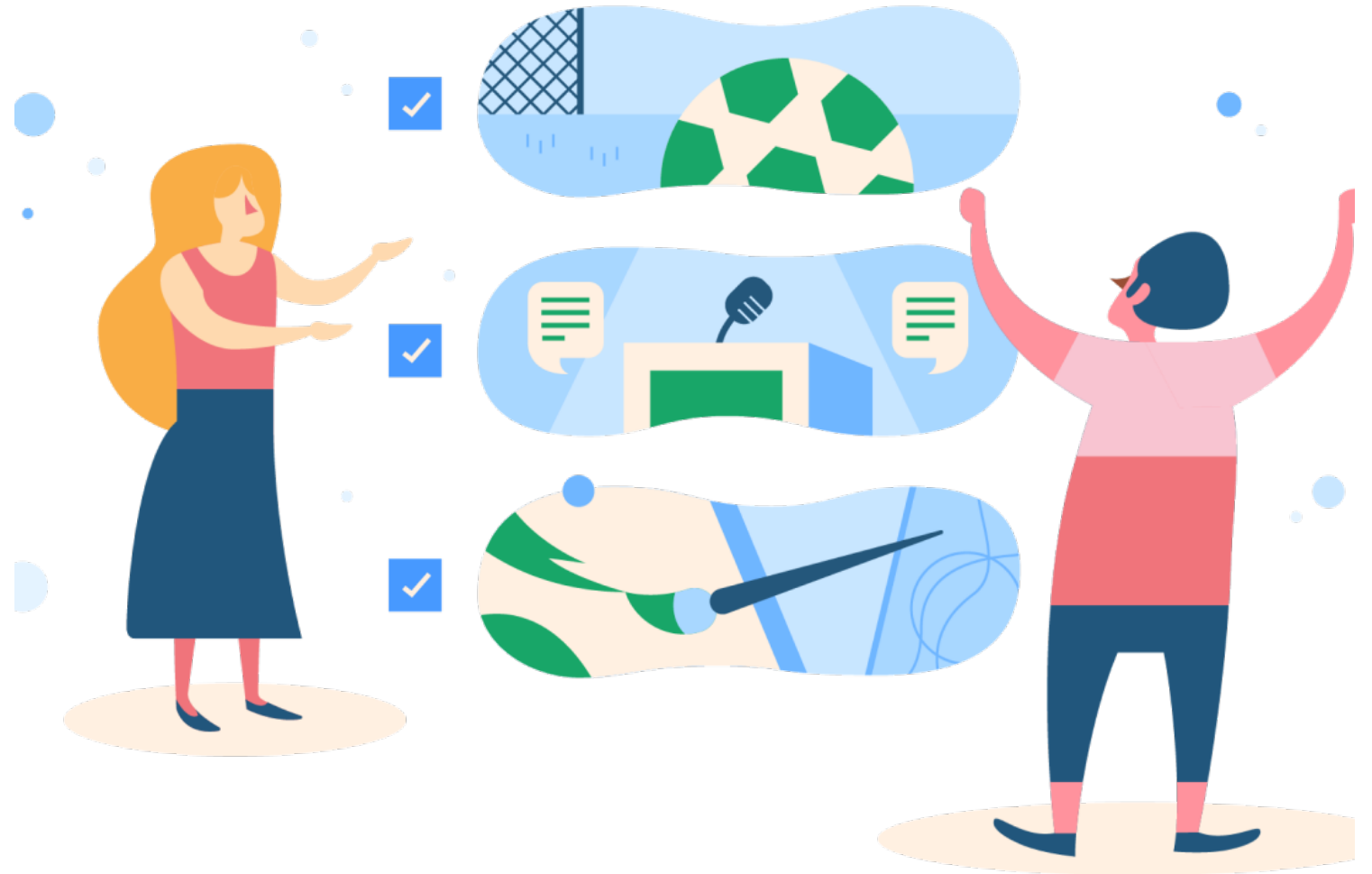
Student Life: Get Involved

- Student Government
- Campus Clubs & Organizations
- Honors Program
- Athletics Department
- Student Activities Board Alliance
- Campus Recreation
- Fitness Center



Student Life: Get Involved

- Student Government
- Campus Clubs & Organizations
- Honors Program
- Athletics Department
- Student Activities Board Alliance
- Campus Recreation
- Fitness Center
- Natatorium



Campus Policy & Procedures

Campus Policy & Procedures



Campus Policy & Procedures

- Statement of Student's Rights and Responsibilities



Campus Policy & Procedures

- Statement of Student's Rights and Responsibilities
- Student's Right to Know



Campus Policy & Procedures

- Statement of Student's Rights and Responsibilities
- Student's Right to Know
- Health or Safety Emergency



Campus Policy & Procedures

- Statement of Student's Rights and Responsibilities
- Student's Right to Know
- Health or Safety Emergency
- Student Code of Conduct



Campus Policy & Procedures

- Statement of Student's Rights and Responsibilities
- Student's Right to Know
- Health or Safety Emergency
- Student Code of Conduct
- Infractions of Student Misconduct



Campus Policy & Procedures

- Statement of Student's Rights and Responsibilities
- Student's Right to Know
- Health or Safety Emergency
- Student Code of Conduct
- Infractions of Student Misconduct
- GCSC ID and Parking Decal



Campus Policy & Procedures

- Statement of Student's Rights and Responsibilities
- Student's Right to Know
- Health or Safety Emergency
- Student Code of Conduct
- Infractions of Student Misconduct
- GCSC ID and Parking Decal
- Drug and Alcohol Abuse Prevention Program



Sexual Harassment Prevention

Sexual Harassment Prevention



Sexual Harassment Prevention

- Short video detailing it's Zero Tolerance Policy toward sexual harassment



Sexual Harassment Prevention

- Short video detailing it's Zero Tolerance Policy toward sexual harassment



Campus Safety

Campus Safety



Campus Safety

- Emergency Text Notification



Campus Safety

- Emergency Text Notification
- Concerning or Threatening Behavior Form



Campus Safety

- Emergency Text Notification
- Concerning or Threatening Behavior Form
- Details information regarding campus parking



Campus Safety

- Emergency Text Notification
- Concerning or Threatening Behavior Form
- Details information regarding campus parking
- Gulf Coast is a Smoke Free & Tobacco Free Campus



Orientation Quiz

- Who is your Pathway Navigator?
- Where do you meet with your Pathway Navigator?
- What determines your readiness for Math and English?